	Type <b>Guideline</b>	Project/Product	
	Name <b>How to find interface serial number</b>	Project Code	
Author <b>FK</b>	Department <b>R&amp;D</b>	Date <b>2023-06-14</b>	
Checked <b>SL</b>	File Name <b>How-to-find-interface-serial-number-sweden(2).odt</b>	Printed <b>2023-08-07</b>	
Approved	Revision <b>\$Rev: \$</b>	Classification <b>PUBLIC</b>	Page <b>1 (1)</b>
Copyright © TKE Sweden AB. All rights reserved. Reproduction, use or disclosure to third parties without express authority is strictly forbidden.			

## Kvaser or Vector interface serial number

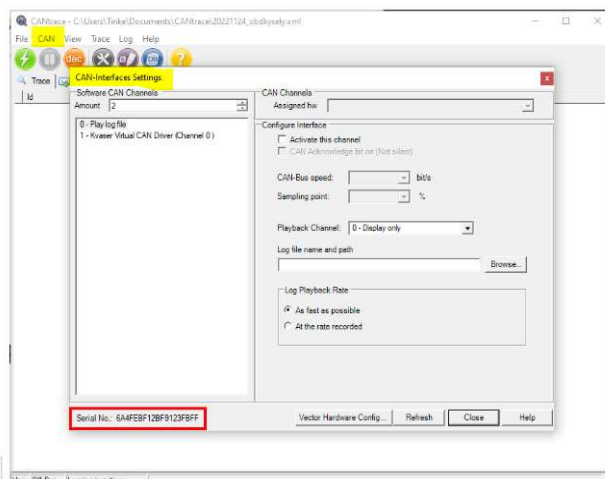
If you have a Kvaser or Vector CAN interface, we generate CANtrace license key based on your interface serial number. You can find the serial number on the label of your CAN interface.

- Kvaser serial number is similar to S/N 029796
- Vector serial number is similar to 007130-005066



## PEAK or PC serial number

If you have a PEAK CAN interface, we generate CANtrace license key based on your computer-ID. In case you don't have a CAN-interface, we can generate the CANtrace license key based on your computer serial number. Install CANtrace on TK Engineering website.



After you have installed CANtrace on your PC, below steps show you how to find the serial number.

1. Start CANtrace
2. Open the CAN → Settings...
3. Find the serial number in the left corner
4. Serial number is similar to 6A4FEBF12BF912FBFF